

COMO

• RESIDENCES •

The Palm

NAKHEEL



Introduction

COMO RESIDENCES
BY NAKHEEL

P. 3

Location

PALM
JUMEIRAH

P. 17

The Story

THE VERTICAL
LAKE

P. 27

Residences

LAVISH
LUXURY LIVING

P. 39

Amenities

A CONTEMPORARY
LIFESTYLE

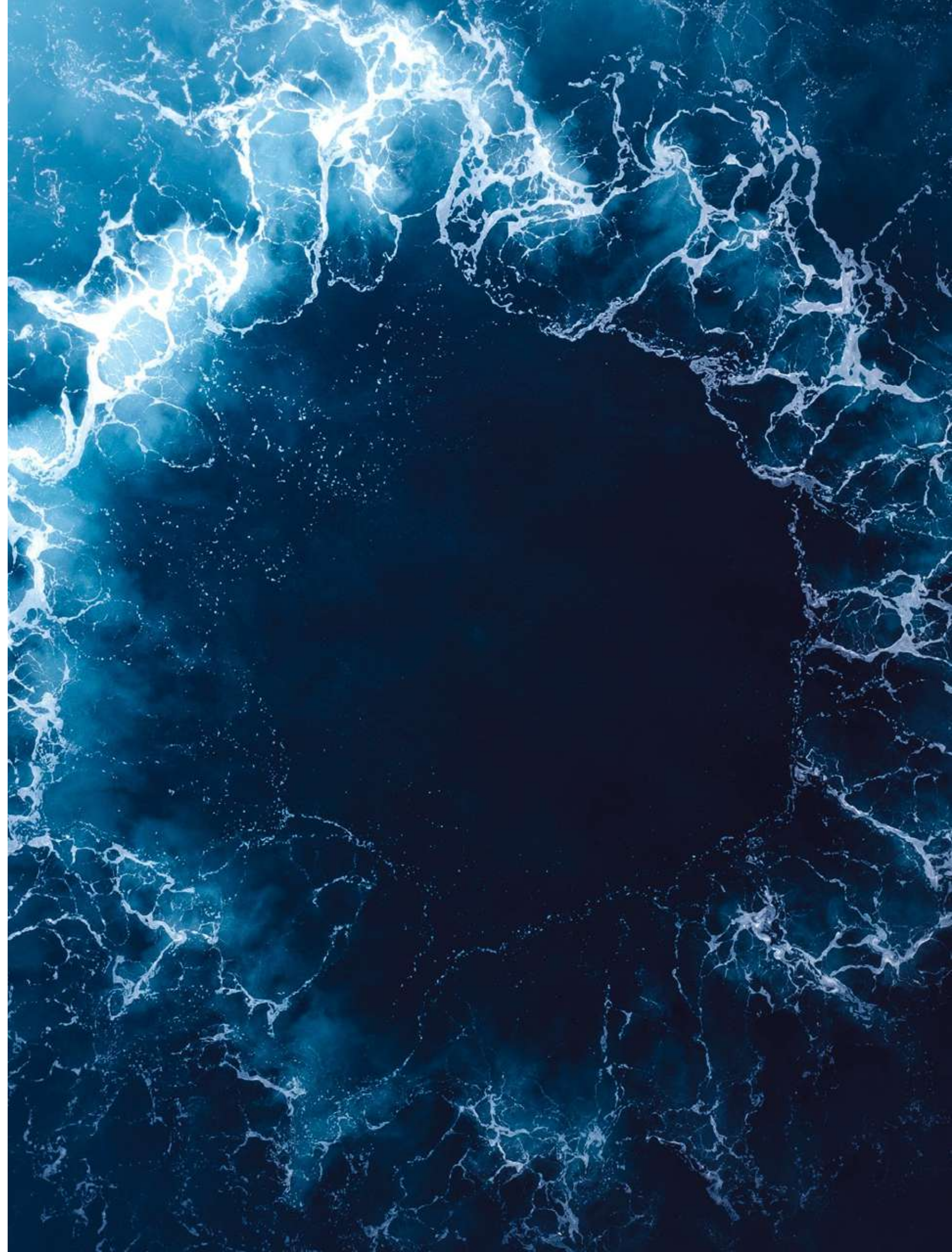
P. 63

INTRODUCTION

COMO RESIDENCES
BY NAKHEEL

NAKHEEL IS REDEFINING
the ART of CITY LIVING

Harnessing the beauty of nature, Nakheel transforms land
and water into innovative landmark destinations.





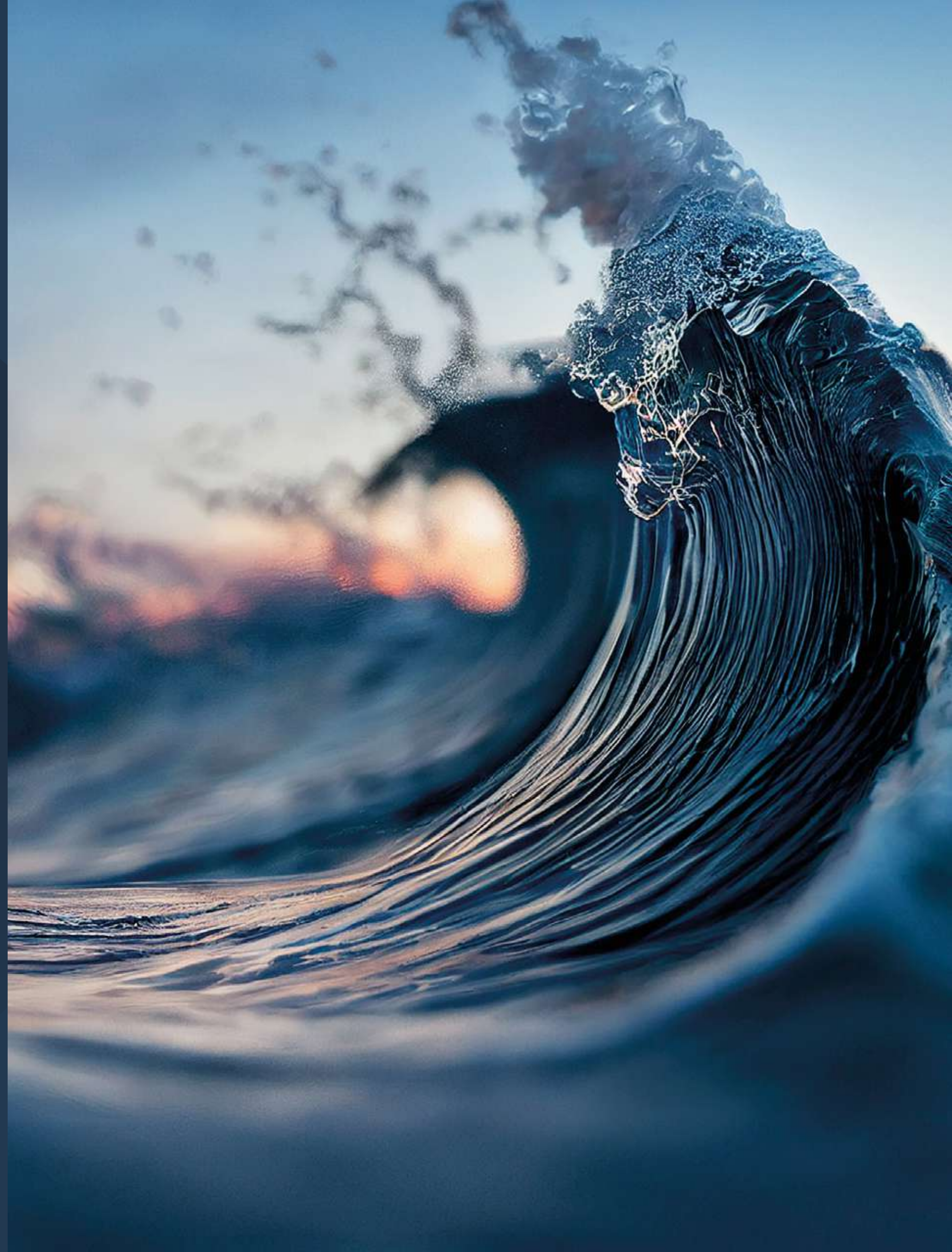
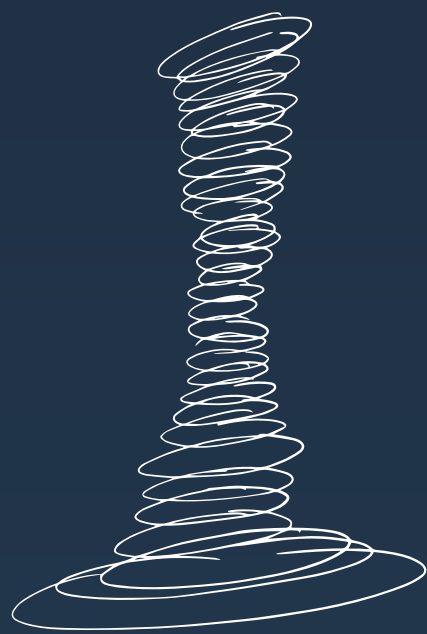
COMO RESIDENCES
PRESENTS *the*
COSMOPOLITAN
MODE *of* LIVING

Como Residences blends the very best of the world's
most luxurious destinations into one monumental,
architectural landmark.



This water-inspired tower boasts 71 floors - each resembling a unique ocean wave. This is the latest chapter in Nakheel's ambitious vision for extraordinary waterfront life in Dubai.

COMO RESIDENCES TAKES THE SHAPE OF AN ORGANIC SEASHELL, RISING TOWARDS THE SKY. THIS ARTWORK IS INSPIRED BY THE GENTLE WAVES OF THE SEA AND SINUOUS CURVES LEFT IN THE SAND.



THIS ARCHITECTURAL MARVEL RISES
IN THE HEART OF PALM JUMEIRAH
AND PRESENTS A SPECTACULAR
COLLECTION OF EXQUISITE PRIVATE
RESIDENCES.

Experience the ultimate in prestigious living where
unbeatable panoramic views, opulent interiors and
exclusive amenities come together to create an unmatched
cosmopolitan lifestyle.





LOCATION

PALM JUMEIRAH





LIVE *in* THE HEART *of* PALM JUMEIRAH

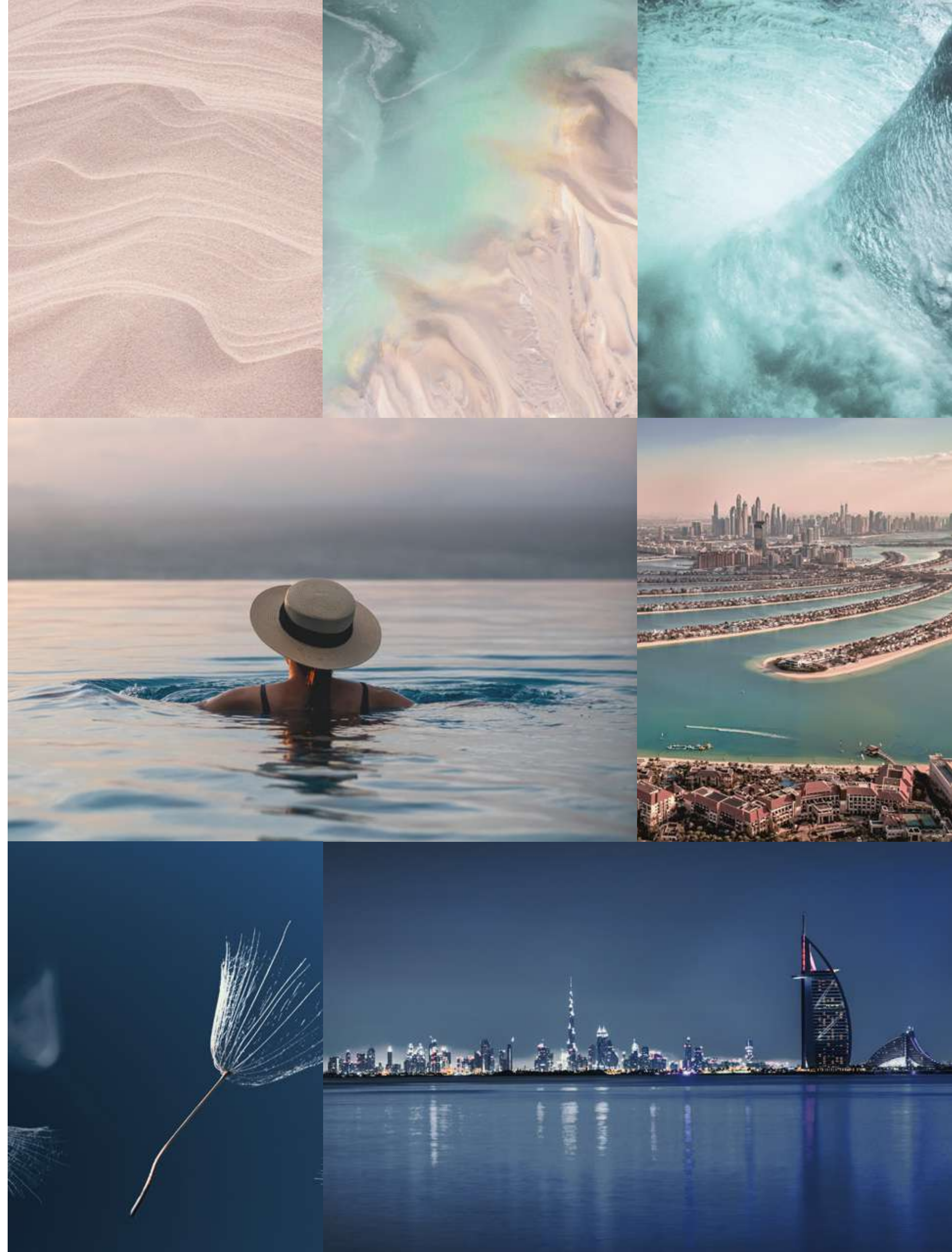
Como Residences is an indelible addition to one of the world's largest man-made islands. Palm Jumeirah is pushing the boundaries to offer the utmost in beachfront allure.

Discover the pinnacle of sophisticated beachfront living. This sleek, majestic tower rises above Palm Jumeirah, harmoniously blending into the world-renowned landscape of extravagant luxury resorts, high-end stores, entertainment venues and supreme dining destinations.



EMBRACE *the* GLAMOUROUS COASTAL LIFESTYLE

Live in the heart of Palm Jumeirah and simultaneously enjoy all the splendors of the city whilst indulging in a glamorous beachside lifestyle.



A DREAM
DESTINATION
SURROUNDED
BY SEA, SUN
and STYLE

From high-end shopping to glamorous events
at luxury beach clubs, the best of Palm Jumeirah is at
your fingertips.



THE STORY

THE VERTICAL
LAKE



A UNIQUE TOWER *of* VERTICAL LAKES

Soak up the serene atmosphere as you
enjoy water activities from sunrise to
sunset.

The statement structure is sculpted into a series vertical lakes, including a variety of communal pools and a selection of exclusive private pools.

COMO RESIDENCES PRESENTS
A CREATIVE SERIES OF LEISURE
POOLS WHERE WATER BECOMES
A MAGICAL ELIXIR.



A PLACE WHERE YOU CAN TRULY FEEL ALIVE

A soaring landmark tower which presents you with a new perspective. A place where every moment is filled with tranquillity, passion and possibility.





EXPERIENCE
THE BEST *of*
ALL WORLDS,
WITHOUT
LEAVING HOME

PALM JUMEIRAH'S NEWEST
LANDMARK ALLOWS YOU TO ENJOY
A TRULY WORLD-CLASS LIFESTYLE.

Explore sweeping terraces with glistening pools and verdant greenery, gaze out at breathtaking views over the sea and cityscape, and relax in wonderfully spacious homes with outstanding amenities. The exclusive collection of luxury apartments and exceptional amenity suite offers residents an ultra-chic, cosmopolitan lifestyle surrounded by art and beauty.



RESIDENCES

LAVISH LUXURY
LIVING



EXCLUSIVE CRAFTED DETAILS *for* BESPOKE LUXURY LIVING

Immerse yourself in sophisticated interiors. The craftsmanship can be seen in the meticulous attention to detail and the exquisite quality of the design.

MAGNIFICENT TERRACES WITH VIEWS OVER *the* ICONIC CITY SKYLINE

Extremely spacious interiors lead out onto vast terraces embellished with lush greenery and unique private pools. Admire breathtaking views towards Burj Al Arab, Burj Khalifa, Palm Jumeirah, and Ain Dubai as you relax and breathe in the fresh sea air. Each exclusive apartment enjoys either 180- or 360-degree panoramic views.



A COLLECTION *of*
EXCEPTIONALLY SPACIOUS
RESIDENCES IN *the* SKY

This exclusive collection of private residences offers a range of spacious layouts and exclusive features. Choose the home that best compliments your ideal contemporary cosmopolitan lifestyle.





EACH HOME BECOMES A HAVEN OF
PEACE AND TRANQUILLITY IN THIS
LANDMARK TOWER.

As you live above the dazzling blue sea, in the
privacy of this exclusive collection of residences
located in the sky, each moment is filled with
serenity. Feel the romance and grandeur of living in a
one-of-a-kind residence.









SURROUND
YOURSELF WITH
BEAUTY, LUXURY,
and COMFORT

The excellence that sets Como Residences apart is the
exclusiveness of the various typologies.





EMBRACE *the* BENEFITS
of SEAMLESS
INDOOR-OUTDOOR
LIVING

Each showstopping residence offers the opportunity to live in refined elegance and sophistication whilst embracing the coastal lifestyle.



AMENITIES

THE CONTEMPORARY
LIFESTYLE



PRIVATE SANDY
BEACH POOL
LOCATED AT THE
PODIUM LEVEL



DEDICATED
25M LAP
SWIMMING POOL



LANDSCAPE
RECREATIONAL
AREAS



PADDLE COURTS
AND SQUASH
COURTS



GYMNASIUM, SPA
AND WELLNESS
CENTER



ROOFTOP AND 360
DEGREE VIEWING
AREA LOCATED
ON LEVEL 71 WITH
AMENITIES



PRIVATE SWIMMING
POOLS FOR
SKY TERRACE
APARTMENTS



CHILDREN'S WET
AND DRY PLAY
AREAS



PRIVATE
CAFÉ
LOUNGE



BUSINESS CENTER
WITH MEETING
ROOMS



CONCIERGE
SERVICE



SEPARATE DRIVERS
QUARTERS



EACH UNIT HAS
INDEPENDENT AND
SECURE STORAGE
COMPARTMENTS



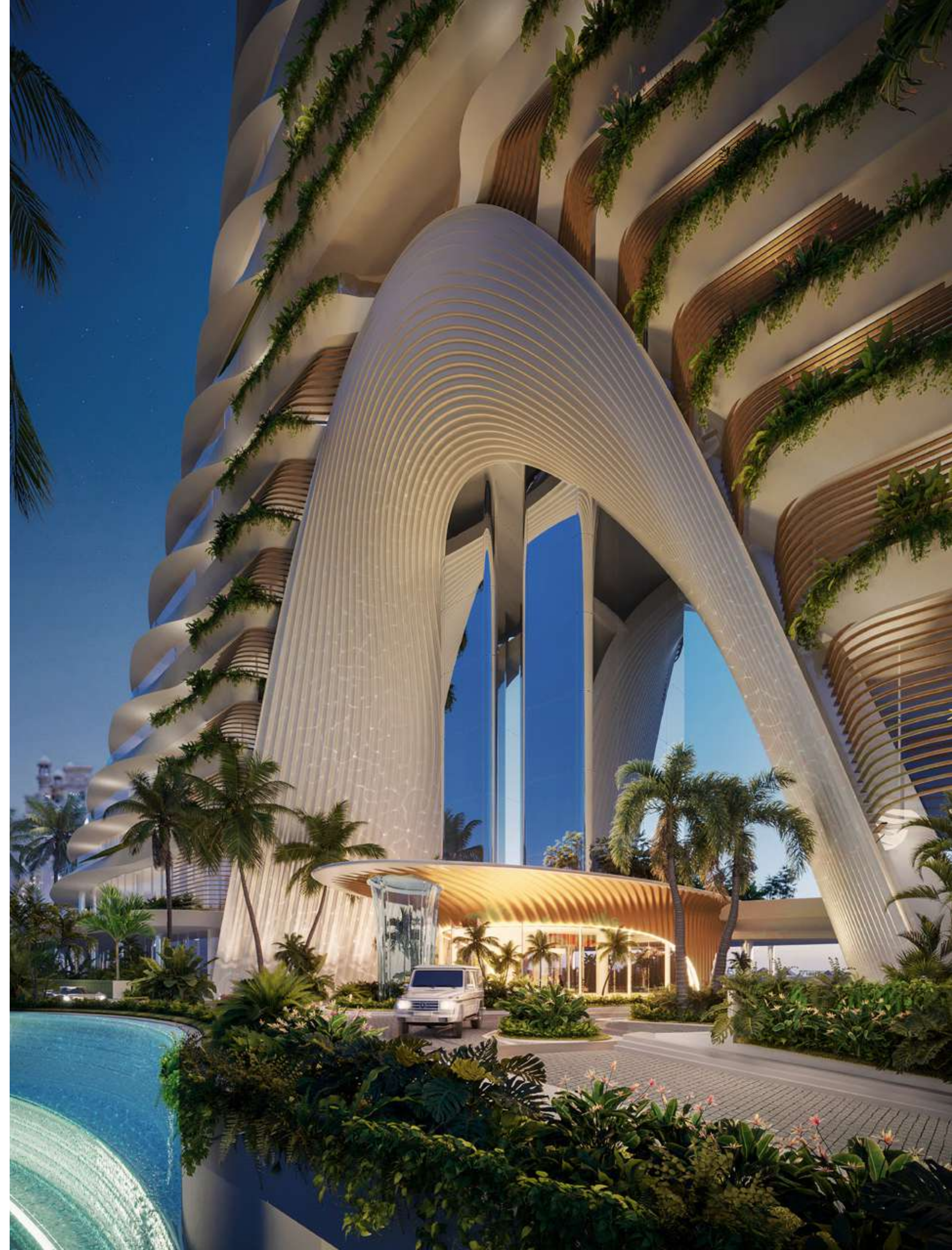
GENEROUS
PARKING
PROVISIONS



PRIVATE LIFT
LOBBY TO EACH
RESIDENCE

THE MASTERPIECE WITH THE GRANDEST *of* ENTRANCES

A grand entrance that opens up a gateway to an exclusive community and a dawn of new cosmopolitan mode of living.





A SPECTACULAR LOBBY WILL WELCOME YOU HOME IN STYLE

Experience a truly harmonious lifestyle with daily assistance from the attentive concierge-services.

TRAVEL IN STYLE *with*
YOUR OWN PRIVATE
LIFT LOBBY

Smart home details and exclusive facilities
are inspired by the innovative spirit of Dubai.



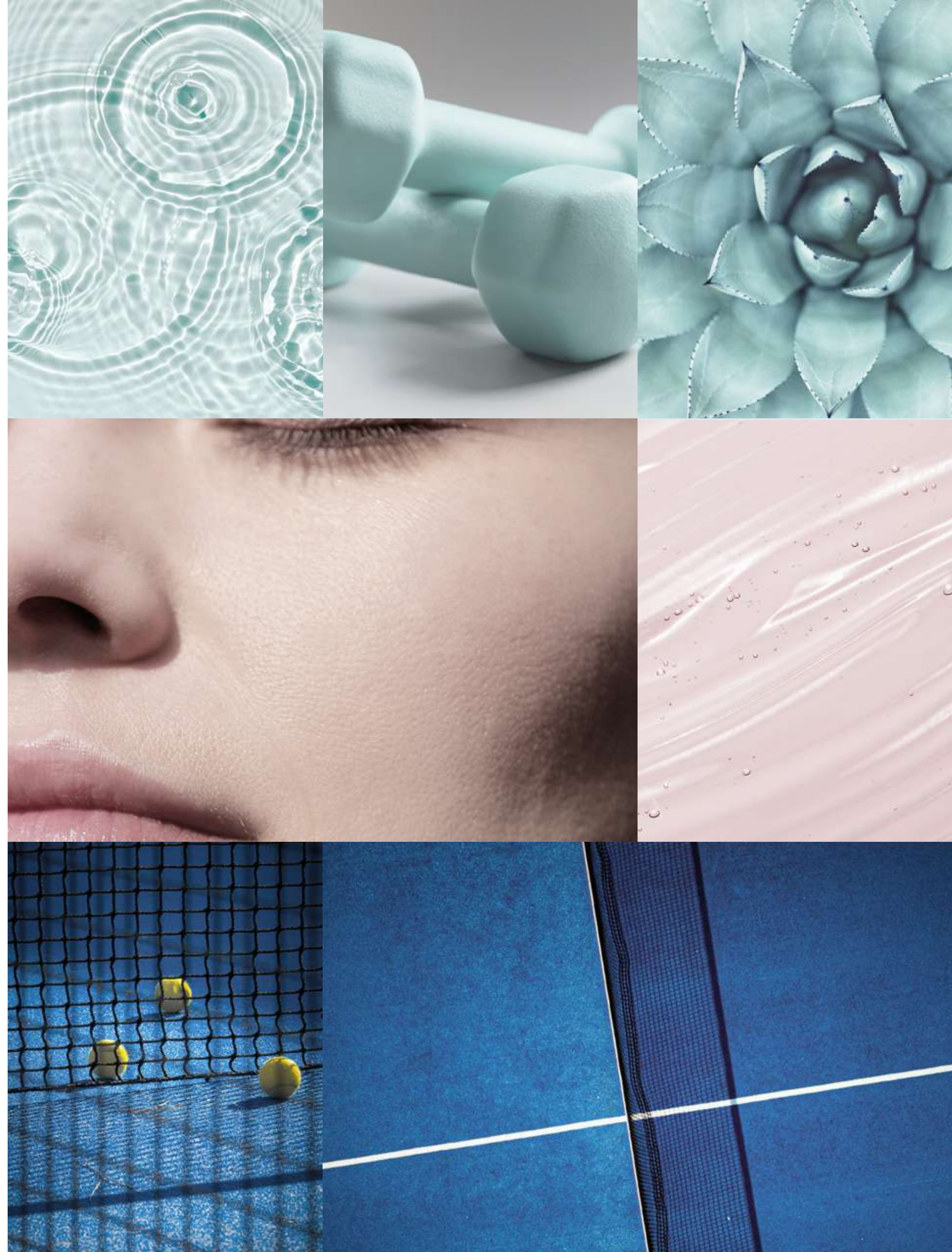


SEAMLESS SERVICES AKIN *to a* LUXURY HOTEL

Feel as though you are enjoying a never-ending holiday from the comfort of your own private home.

A WIDE ARRAY *of*
WELLNESS AMENITIES *for a*
BALANCED LIFESTYLE

Como Residences paints the perfect portrait of contemporary living with a wide array of active activities for every mood.





A SURREAL ROOFTOP POOL *with 360°* VIEWS *of* THE CITY

Water is an essential component of Como Residences. Luxuriate in the serenity of the rooftop pool on the 71st floor as you float in glittering water.

THE AWE-INSPIRING INFINITY POOL, WITH A SUBLIME VIEWING DECK, OFFERS THE HIGHEST VIEWING POINT IN ALL OF PALM JUMEIRAH.

At night, the pool area transforms into a magical wonderland, a galaxy of dazzling lights from the illuminated city below, creating a truly enchanting ambiance. Socialise above the city and enjoy the full panorama of luxury living.



A SERENE *and*
SOPHISTICATED LIFESTYLE
AWAITS YOU.

Como Residences is your own personal beachfront haven. The awe-inspiring sunrise to sunset views will continuously amaze you. Relax and unwind in this remarkable beachfront paradise in the sky.



COMO

• RESIDENCES •

The Palm

CONTACT INFORMATION:

800 NAKHEEL
info@nakheel.com

SALES CENTRE:

King Salman Bin Abdul Aziz Al Saud Street,
Al Sufouh 2 - King Salman Bin Abdulaziz Al
Saud St - Dubai

NAKHEEL

This publication is for illustrative purposes only. Some of the images shown in the document were developed with computer graphics technology (photorealistic rendering), with reference to details of the façade and elevations, common areas, private areas and interiors of the apartments, for the sole purpose of presenting a plan for future realization and/or the various, potential solutions following user customization. All furniture and art are represented for marketing and rendering purposes only. For this reason, all information, descriptions and images are purely indicative and subject to change. This document has no contractual value and is not binding on the investment company that owns the rights and information reported. The reproduction and the partial use of texts and images is forbidden without prior authorization.



